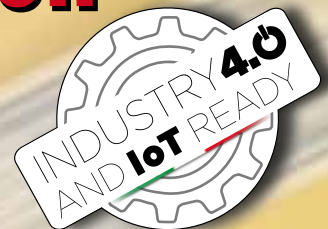


MINIDUPLEX®

HIGH TECH MINI AND MODULAR CALENDERING PLANT SUITABLE
FOR FABRIC AND STEEL CORD RUBBERIZING PROCESS



MINI CALENDERING UNIT MODULAR CONFIGURATION



COMERIO ERCOLE

MECHANICAL CONSTRUCTIONS SINCE 1885 - ITALY



QUALITY PROOF®
MADE IN ITALY

Based on long term experience in the calendering field **COMERIO ERCOLE** has developed and realized a new **MINICALENDERLINE** flexible series based on a range of different modules in order to meet special customer needs according to tailored laboratory and/or reduced production range. Based on co-shared R&D projects **COMERIO ERCOLE** is in the position to develop and manufacture suitable **MINICALENDERLINE** solutions obtaining the following main performances:

- Flexibility to produce different materials on the same plant
- Experiment new technologies and new materials
- Flexibility to produce short products campaign
- Process cost saving and scrap reduction
- Reduced lay out configuration with space saving

The typical **MINIDUPLEX®** size is based on a four roll fabric and steel calender with 410 or 460 roll diameter and 800 or 1000 mm roll width, it is designed with a special frame 45° configuration in order to be delivered fully assembled and wired on board. Eventual 30° frame configuration is also available for special application and end user needs. Productivity of a plant based on a **MINICALENDERLINE** is reduced according to the involved technical performances in terms of product width and production speed. New innovative techniques can be introduced and tested on a **MINIDUPLEX®** calenderline.



HYDROPLUS®
HIGH PERFORMANCE GAP CONTROL CONCEPT

HYDROGAP®
SPEED & PRECISION

HYDRONIP®
SPEED & PRECISION FLEXIBLE CONTROL

HYDROSAFE®
PLUS

Miniduplex is equipped with all the most innovative devices in terms of high performance and reliability.

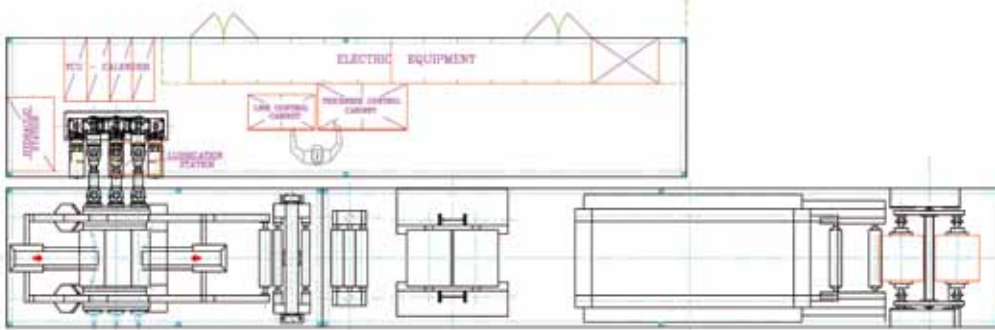
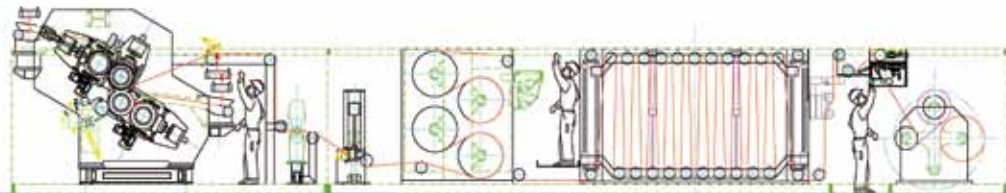


MAIN MINIDUPLEX® CALENDERLINE FEATURES:

MINIDUPLEX® is the already experienced **MINICALENDERLINE** project recently provided by **COMERIO ERCOLE** on the base of long and deep R&D activity. The **MINICALENDERLINE** is suitable for fabric and steel cord process with a specific integrated layout granting an use of a very reduced floor space. The main advantage of the **MINICALENDERLINE** arranged in a compact layout is the possibility to pre-test all the scope before delivery enabling a very short installation time for a very quick start up.

MAIN DUPLEXCONTAINER® CALENDERLINE FEATURES:

DUPLEXCONTAINER® is a different and challenging project under development by **COMERIO ERCOLE** based on a **MINICALENDERLINE** container arrangement. The **MINICALENDERLINE** in the case is developed based on a special engineering of each involved module on the base of a typical container size 40ft or 20ft platform where each section can be completely wired and connected before delivery. Based on the module selection, it is possible to complete a fabric cord calenderline and/or steel cord calenderline and/or a dual purpose one. The main advantage of the **MINICALENDERLINE** arranged on container platforms is the possibility to install and put into production a line on site very quickly, keeping the possibility to move easily the line in a different location, upon customer needs.

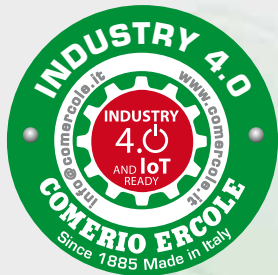
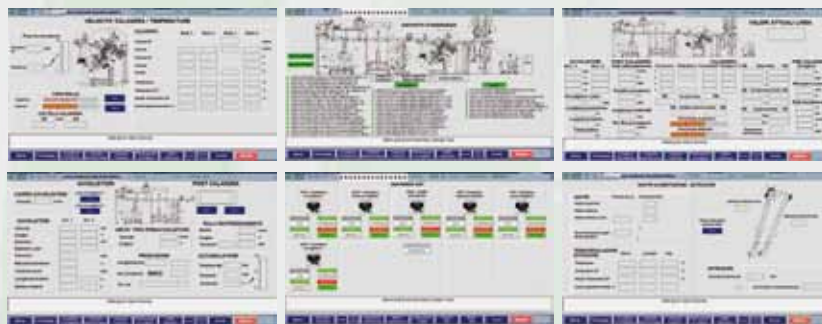




ENGINEERING AND R&D KNOW-HOW

Based on its R&D available laboratories **COMERIO ERCOLE** is in a position to manage “co-sharing” R&D projects supplying engineering and technological know-how services if required and suitable for the required production process.

The control is MES integrated with DATA COLLECTION according to available specific and dedicated packages for main customer requirements granting a 360° INDUSTRY 4.0 approach.



COMERIO ERCOLE

MECHANICAL CONSTRUCTIONS



21052 BUSTO ARSIZIO (VA) ITALY - Via Castellanza, 100
Tel. +39.0331.488411 - Fax +39.0331.488421
Customer Service Fax +39.0331.488513

Internet: <http://www.comercole.it> E-mail: info@comercole.it

www.comercole.it